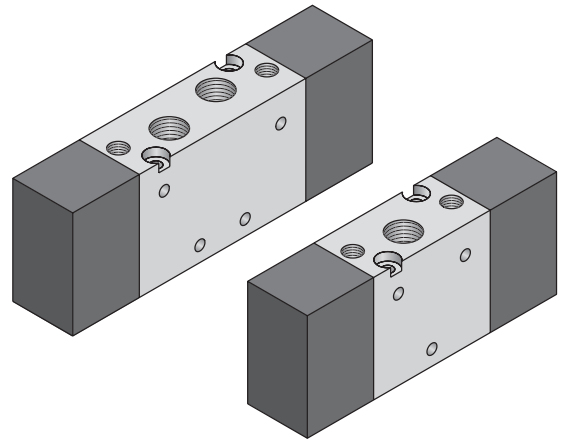


valvole 18 mm ad azionamento pneumatico

pneumatically piloted valves - 18 mm



- Valvole a spola 3/2-5/2-5/3 con attacchi filettati G1/8"
3/2-5/2-5/3 spool valves with G1/8" threaded ports
- Spessore della valvola: 18 mm
Valve thickness: 18 mm
- Montaggio in linea, su basi modulari o a posti fissi
Installation in-line, on multiple sub-bases or manifolds
- Azionamento pneumatico monostabile o bistabile
Mono-stable or bi-stable pneumatic pilot



Tempi di risposta - response times

monostabile <i>mono-stable</i>	TRA (14): 12 ms TRR (12): 24 ms
bistabile <i>bi-stable</i>	TRA (14): 21 ms TRR (12): 21 ms

Materiali

Corpo: alluminio 11S
Molle: INOX
Guarnizioni: NBR
Spola: alluminio nichelato
Parti interne: ottone OT58

Materials

Body: aluminium 11S
Springs: stainless steel
Seals: NBR
Spool: nickel plated aluminium
Internal parts: brass OT58

Diametro nominale <i>Nominal orifice</i>	4.5 mm	
Portata nominale a 6 bar, Δp 1 bar <i>Nominal flow rate at 6 bar, Δp 1 bar</i>	500 NI/min	
Temperatura di esercizio <i>Temperature range</i>	max +60°C	
Pressione di esercizio <i>Working pressure</i>	max 10 bar max 1 MPa	
Pressione di azionamento <i>Actuating pressure</i>	monostabile [<i>mono-stable</i>]	bistabile [<i>bi-stable</i>]
	3 ... 10 bar 0.3 ... 1 MPa	2 ... 10 bar 0.2 ... 1 MPa
Fluido <i>Fluid</i>	Aria filtrata 50 μ con o senza lubrificazione <i>50μ filtered, lubricated or non lubricated air</i>	

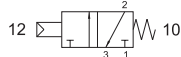
valvole 18 mm ad azionamento pneumatico

pneumatically piloted valves - 18 mm



731 MC

normalmente chiusa
normally closed



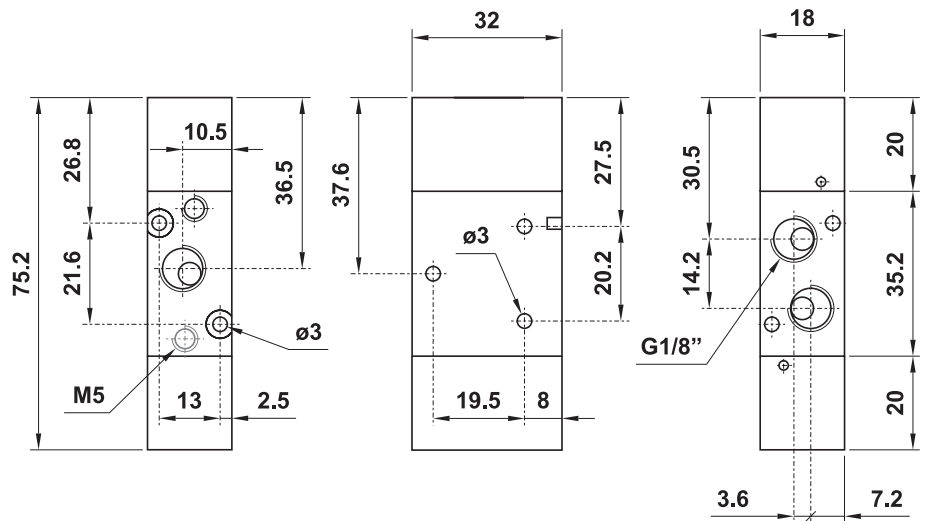
731 MCA

normalmente aperta
normally open



3/2 1/8" comando pneumatico - ritorno a molla

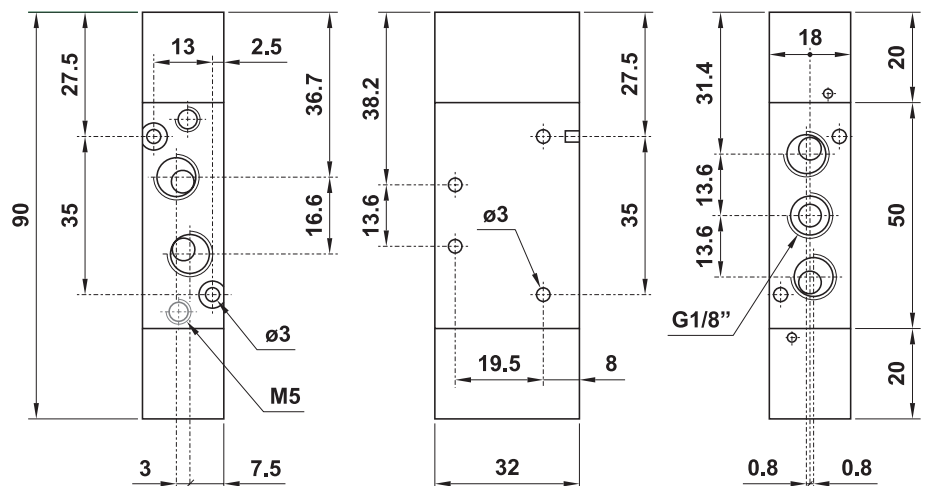
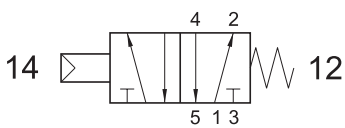
3/2 1/8" pneumatic pilot - spring return



751 MC

5/2 1/8" comando pneumatico - ritorno a molla

5/2 1/8" pneumatic pilot - spring return



valvole 18 mm ad azionamento pneumatico

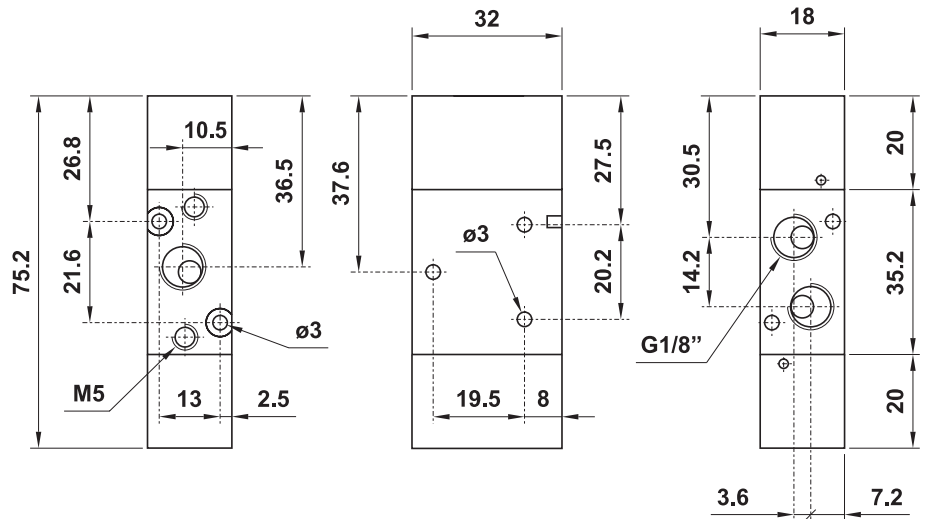
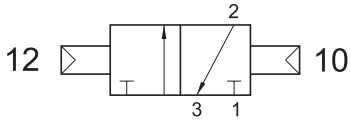
pneumatically piloted valves - 18 mm



731 CC

3/2 1/8" doppio comando pneumatico

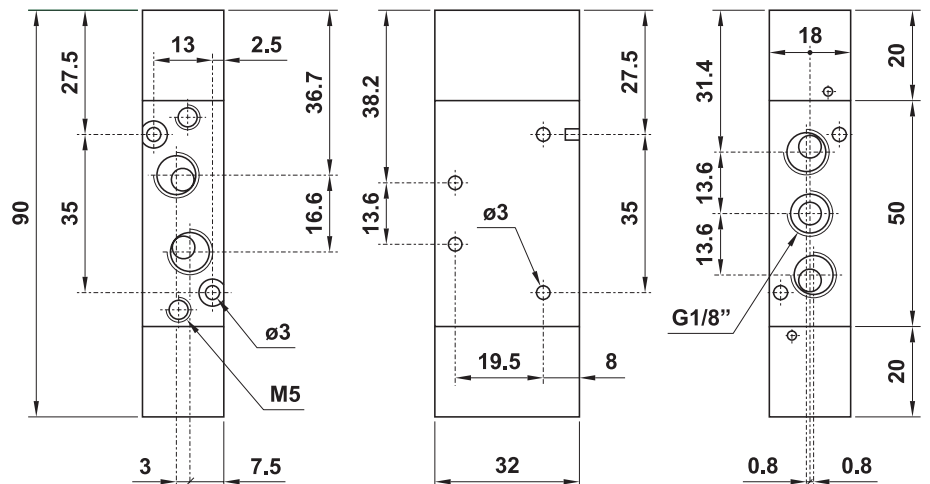
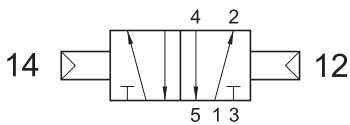
3/2 1/8" double pneumatic pilot



751 CC

5/2 1/8" doppio comando pneumatico

5/2 1/8" double pneumatic pilot



valvole 18 mm ad azionamento pneumatico

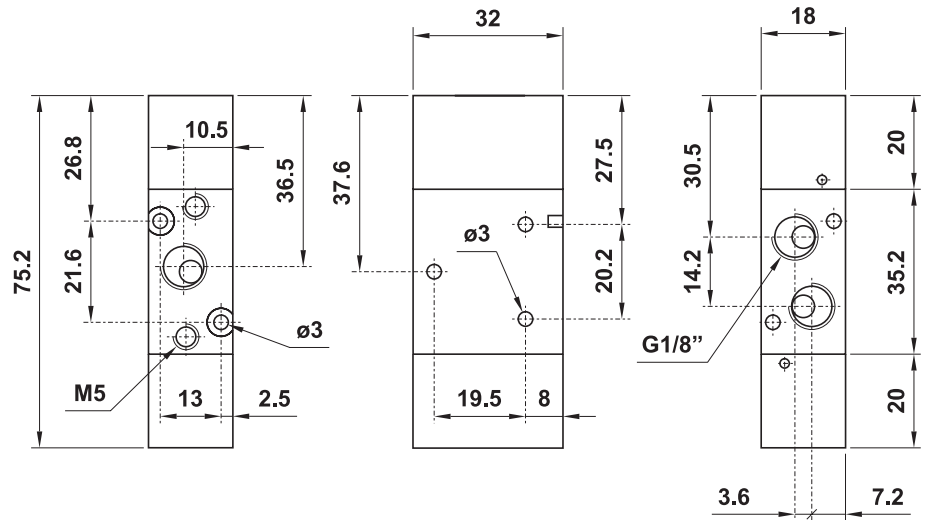
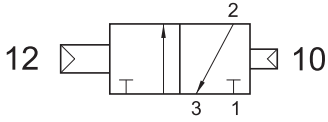
pneumatically piloted valves - 18 mm



731 CCD

3/2 1/8" doppio comando pneumatico - con differenziale

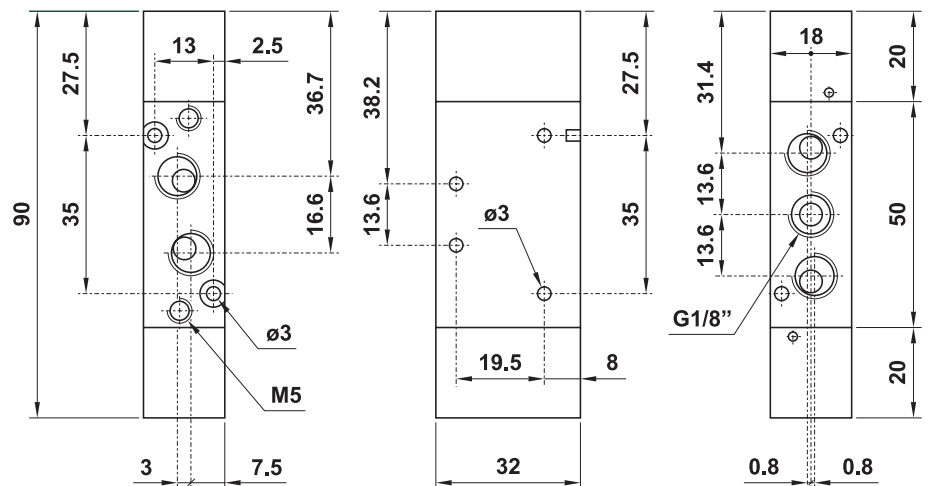
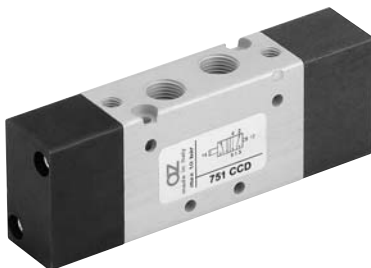
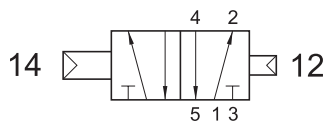
3/2 1/8" double pneumatic pilot - with differential



751 CCD

5/2 1/8" doppio comando pneumatico - con differenziale

5/2 1/8" double pneumatic pilot - with differential



valvole 18 mm ad azionamento pneumatico

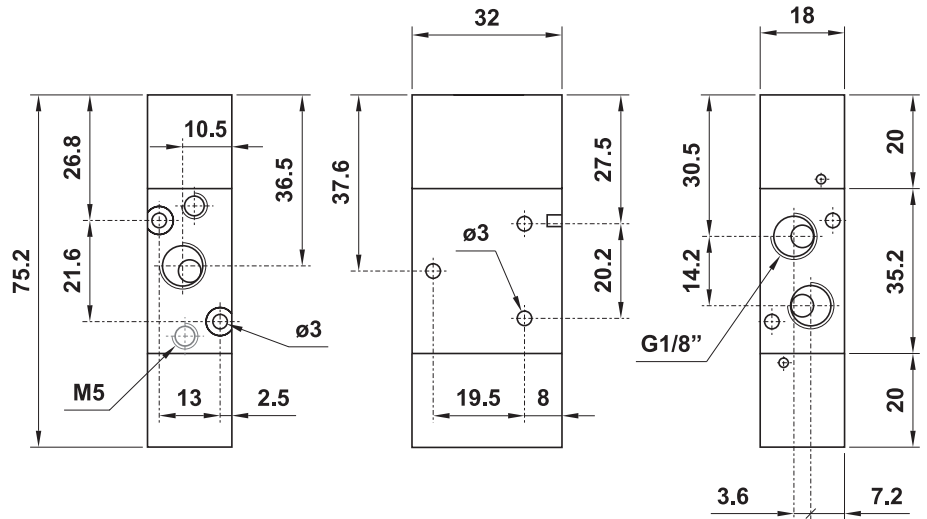
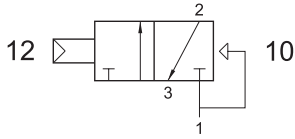
pneumatically piloted valves - 18 mm



731 CFP

3/2 1/8" NC comando pneumatico - ritorno a molla pneumatica

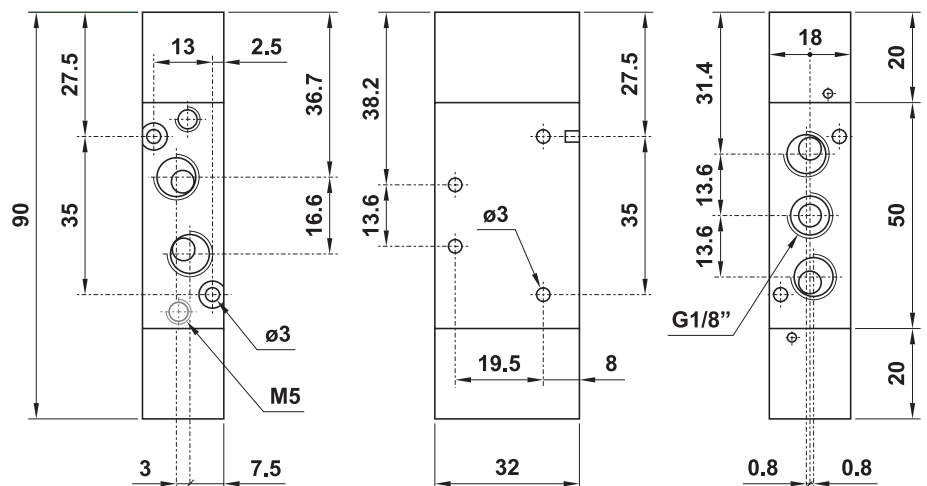
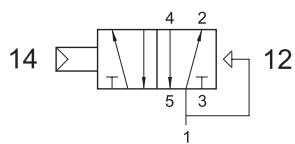
3/2 1/8" NC pneumatic pilot - pneumatic spring return



751 CFP

5/2 1/8" comando pneumatico - ritorno a molla pneumatica

5/2 1/8" pneumatic pilot - pneumatic spring return



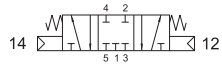
valvole 18 mm ad azionamento pneumatico

pneumatically piloted valves - 18 mm



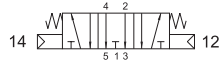
7513C CC

centri chiusi
closed centres



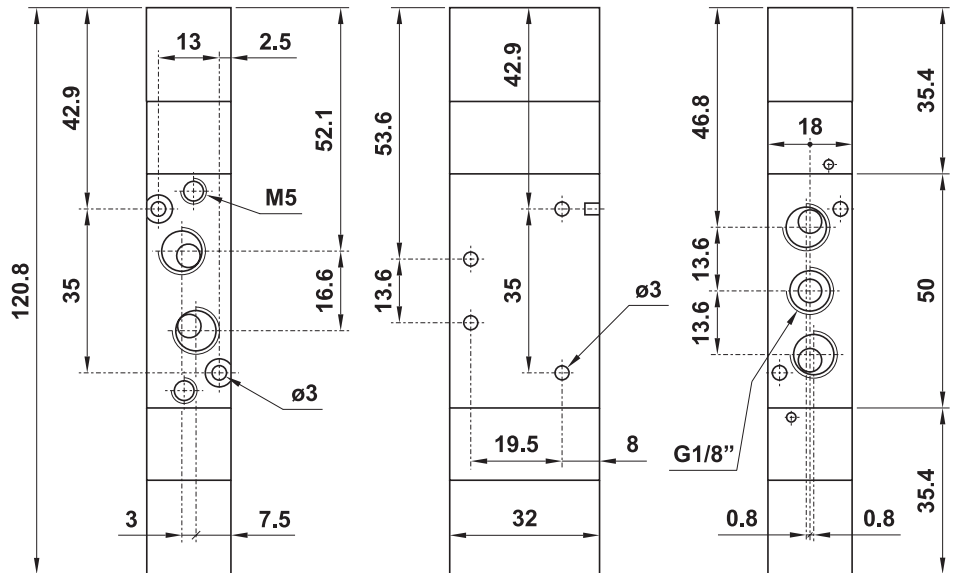
7513A CC

centri aperti
open centres



5/3 1/8" doppio comando pneumatico

5/3 1/8" double pneumatic pilot

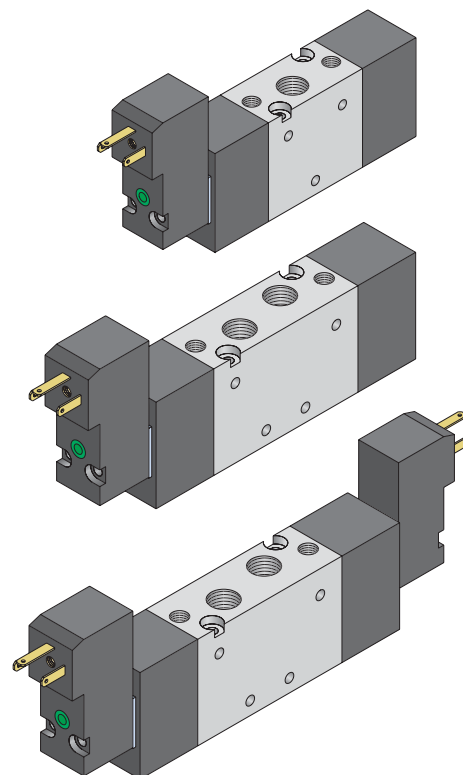


valvole 18 mm ad azion. elettropneumatico

solenoid actuated valves - 18 mm



- Valvole a spola 3/2-5/2-5/3 con attacchi filettati G1/8"
3/2-5/2-5/3 spool valves with G1/8" threaded ports
- Spessore della valvola: 18 mm
Valve thickness: 18 mm
- Montaggio in linea, su basi modulari o a posti fissi
Installation in-line, on multiple sub-bases or manifolds
- Azionamento elettropneumatico monostabile o bistabile
Mono-stable or bi-stable solenoid pilot
- Elettropilota 15 mm basso assorbimento (2W) a norma DIN 43650, forma C
15 mm low consumption solenoid pilot (2W), compliant to norm DIN 43650, C form
- Azionatore manuale monostabile sull'elettropilota
Non-detented manual override on the solenoid pilot



I prodotti di seguito indicati sono venduti con elettropilota/i montato/i (per i dati tecnici vedi pag. 102).
The following listed products are sold with mounted solenoid pilot(s); for technical data see page 102.

Tempi di risposta - response times

monostabile <i>mono-stable</i>	TRA (14): 13 ms TRR (12): 26 ms
bistabile <i>bi-stable</i>	TRA (14): 24 ms TRR (12): 24 ms

Materiali

Corpo: alluminio 11S
Molle: INOX
Guarnizioni: NBR
Spola: alluminio nichelato
Parti interne: ottone OT58

Materials

Body: aluminium 11S
Springs: stainless steel
Seals: NBR
Spool: nickel plated aluminium
Internal parts: brass OT58

Diametro nominale <i>Nominal orifice</i>		4.5 mm	
Portata nominale a 6 bar, Δp 1 bar <i>Nominal flow rate at 6 bar, Δp 1 bar</i>		500 NI/min	
Temperatura di esercizio <i>Temperature range</i>		max +60°C	
Pressione di esercizio <i>Working pressure</i>	al. interna monost. <i>[monost. internal air supply]</i>	al. interna bist. <i>[bi-stable internal air supply]</i>	alim. separata <i>[separate air supply]</i>
	3 ... 10 bar 0.3 ... 1 MPa	2 ... 10 bar 0.2 ... 1 MPa	max 10 bar max 1 MPa
Pressione di azionamento (per alimentazione separata) <i>Actuating pressure (for separate air supply)</i>	monostabile <i>[mono-stable]</i>		bistabile <i>[bi-stable]</i>
	3 ... 10 bar 0.3 ... 1 MPa		2 ... 10 bar 0.2 ... 1 MPa
Fluido <i>Fluid</i>	Aria filtrata 50μ con o senza lubrificazione <i>50μ filtered, lubricated or non lubricated air</i>		

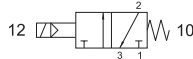
valvole 18 mm ad azion. elettropneumatico

solenoid actuated valves - 18 mm



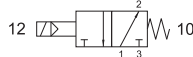
731 ME xx

normalmente chiusa
normally closed



731 MEA xx

normalmente aperta
normally open

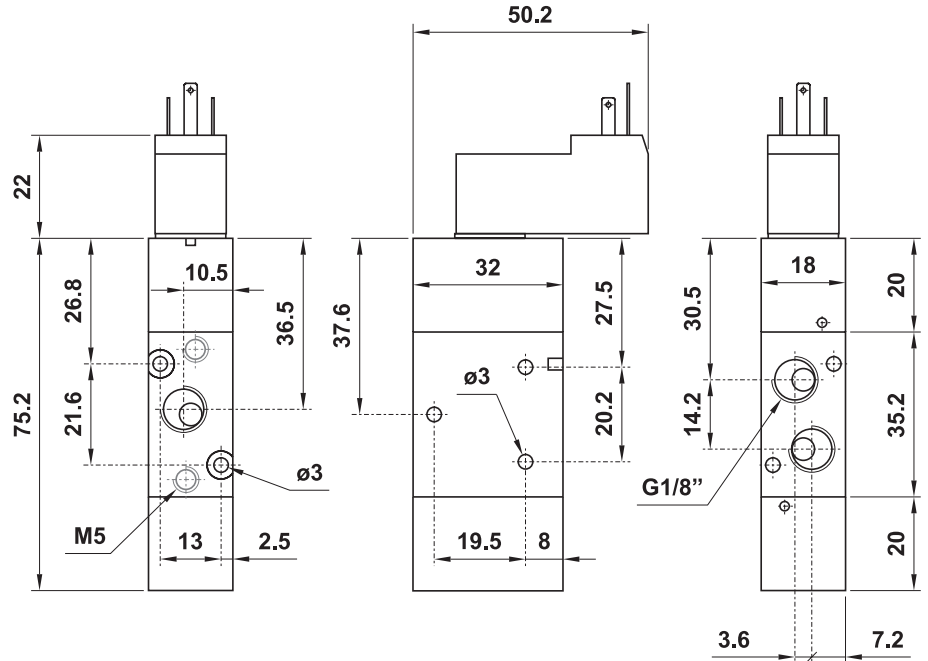
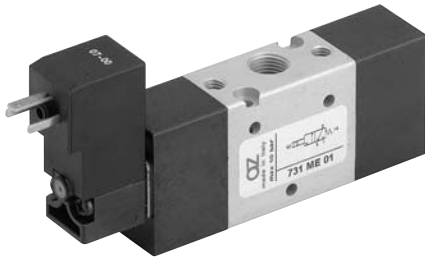


3/2 1/8" comando elettrico - ritorno a molla

3/2 1/8" solenoid pilot - spring return

Nella sigla del prodotto sostituire le lettere "xx" con l'indicazione della tensione.
In the part number replace "xx" with the reference of the solenoid tension.

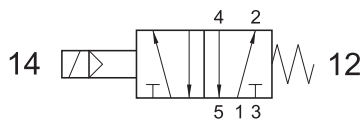
12V DC	00
24V DC	01
24V 50/60Hz	02
110V 50/60Hz	03
220V 50/60Hz	04



751 ME xx

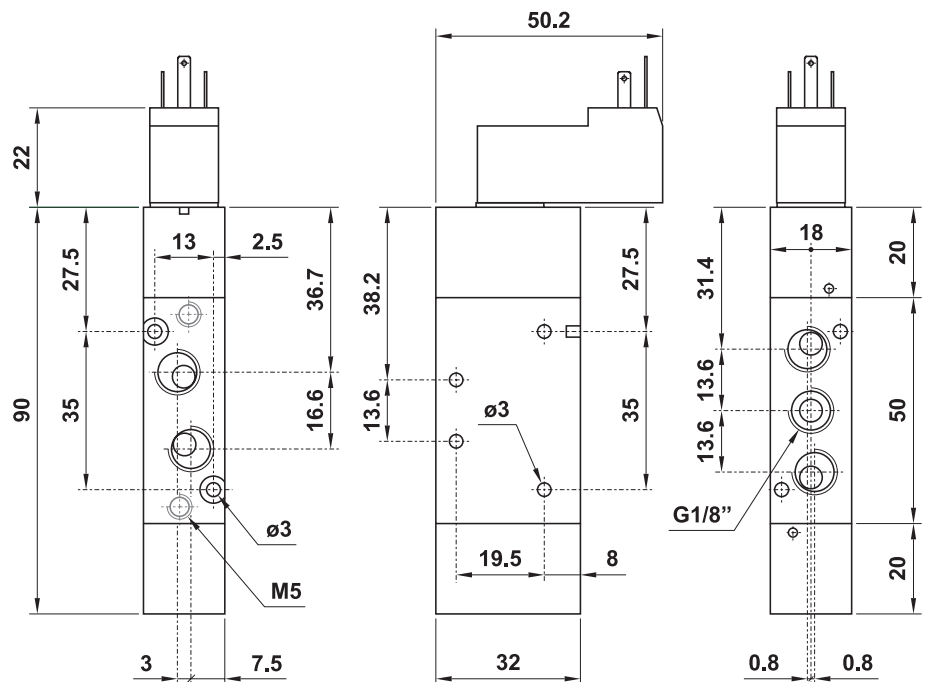
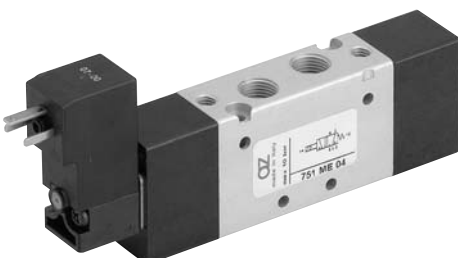
5/2 1/8" comando elettrico - ritorno a molla

5/2 1/8" solenoid pilot - spring return



Nella sigla del prodotto sostituire le lettere "xx" con l'indicazione della tensione.
In the part number replace "xx" with the reference of the solenoid tension.

12V DC	00
24V DC	01
24V 50/60Hz	02
110V 50/60Hz	03
220V 50/60Hz	04



valvole 18 mm ad azion. elettropneumatico

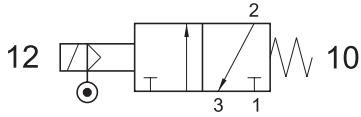
solenoid actuated valves - 18 mm



731 ME AS xx

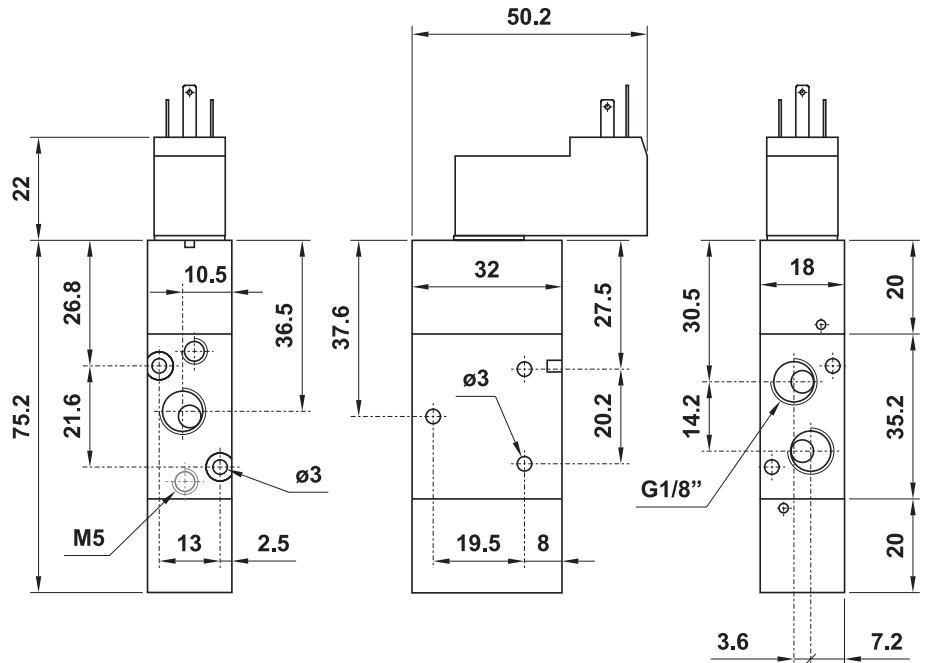
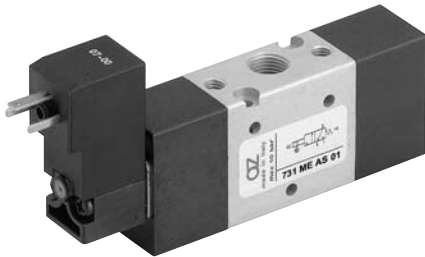
3/2 1/8" comando elettrico alimentazione separata - ritorno a molla

3/2 1/8" solenoid pilot with separate air supply - spring return



Nella sigla del prodotto sostituire le lettere "xx" con l'indicazione della tensione.
In the part number replace "xx" with the reference of the solenoid tension.

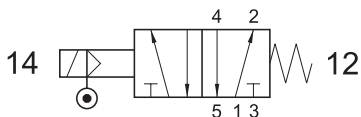
12V DC	00
24V DC	01
24V 50/60Hz	02
110V 50/60Hz	03
220V 50/60Hz	04



751 ME AS xx

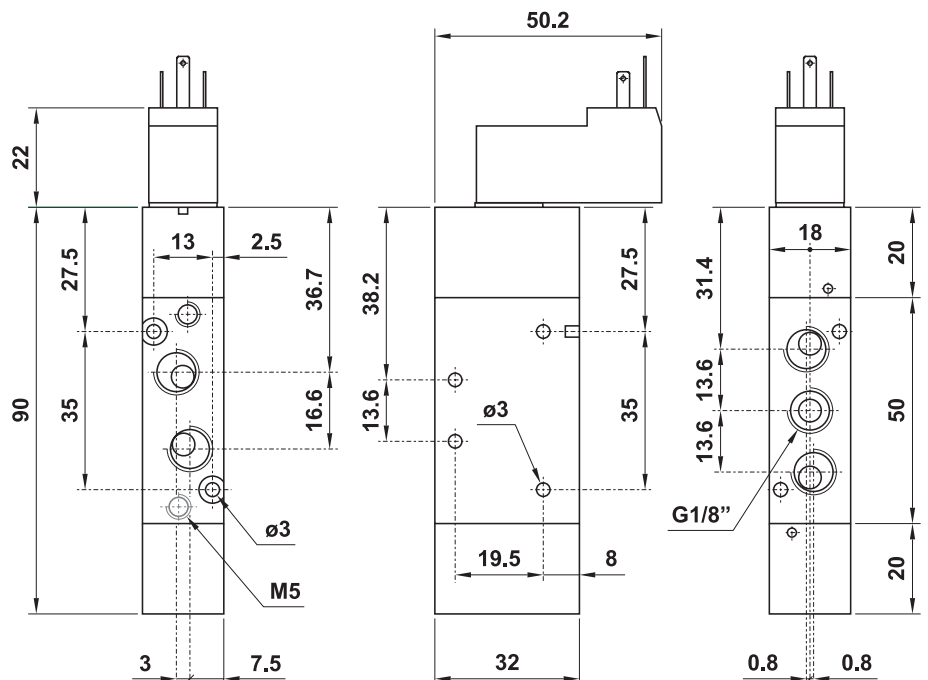
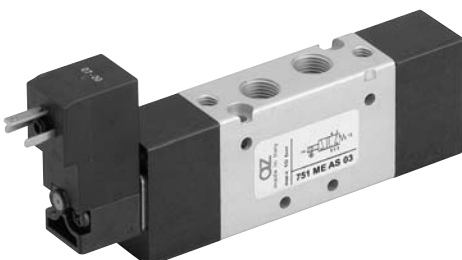
5/2 1/8" comando elettrico alimentazione separata - ritorno a molla

5/2 1/8" solenoid pilot with separate air supply - spring return



Nella sigla del prodotto sostituire le lettere "xx" con l'indicazione della tensione.
In the part number replace "xx" with the reference of the solenoid tension.

12V DC	00
24V DC	01
24V 50/60Hz	02
110V 50/60Hz	03
220V 50/60Hz	04



valvole 18 mm ad azion. elettropneumatico

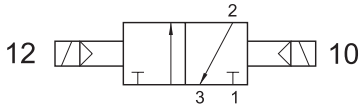
solenoid actuated valves - 18 mm



731 EE xx

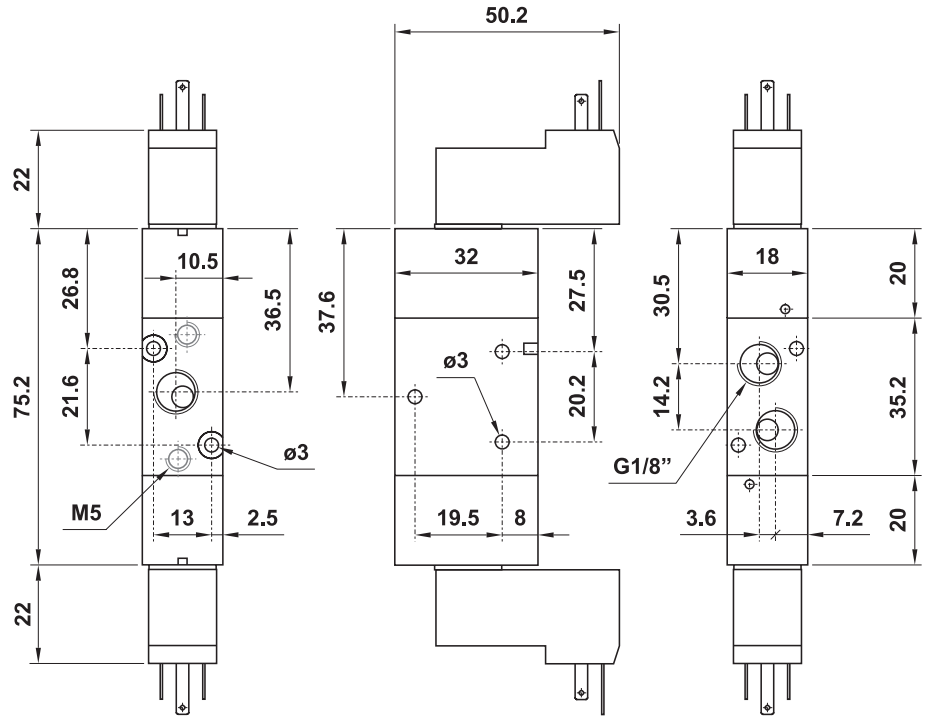
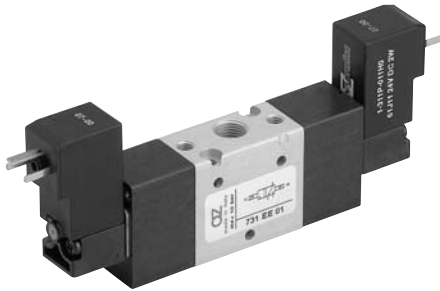
3/2 1/8" doppio comando elettrico

3/2 1/8" double solenoid pilot



Nella sigla del prodotto sostituire le lettere "xx" con l'indicazione della tensione.
In the part number replace "xx" with the reference of the solenoid tension.

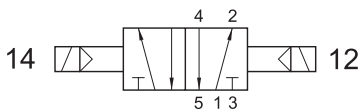
12V DC	00
24V DC	01
24V 50/60Hz	02
110V 50/60Hz	03
220V 50/60Hz	04



751 EE xx

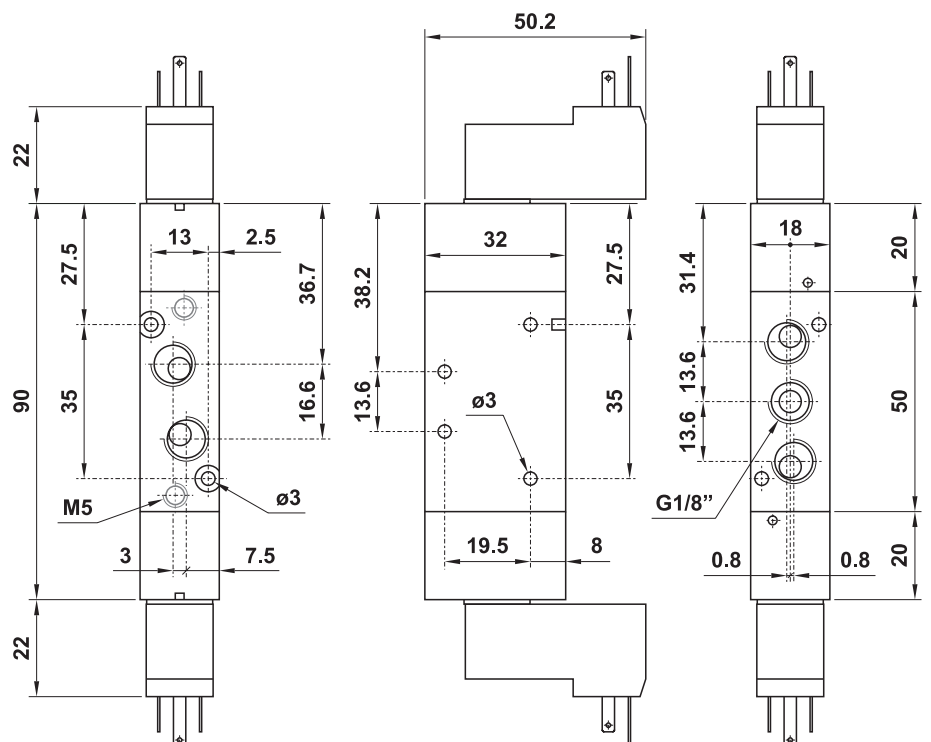
5/2 1/8" doppio comando elettrico

5/2 1/8" double solenoid pilot



Nella sigla del prodotto sostituire le lettere "xx" con l'indicazione della tensione.
In the part number replace "xx" with the reference of the solenoid tension.

12V DC	00
24V DC	01
24V 50/60Hz	02
110V 50/60Hz	03
220V 50/60Hz	04



valvole 18 mm ad azion. elettropneumatico

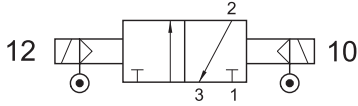
solenoid actuated valves - 18 mm



731 EE AS xx

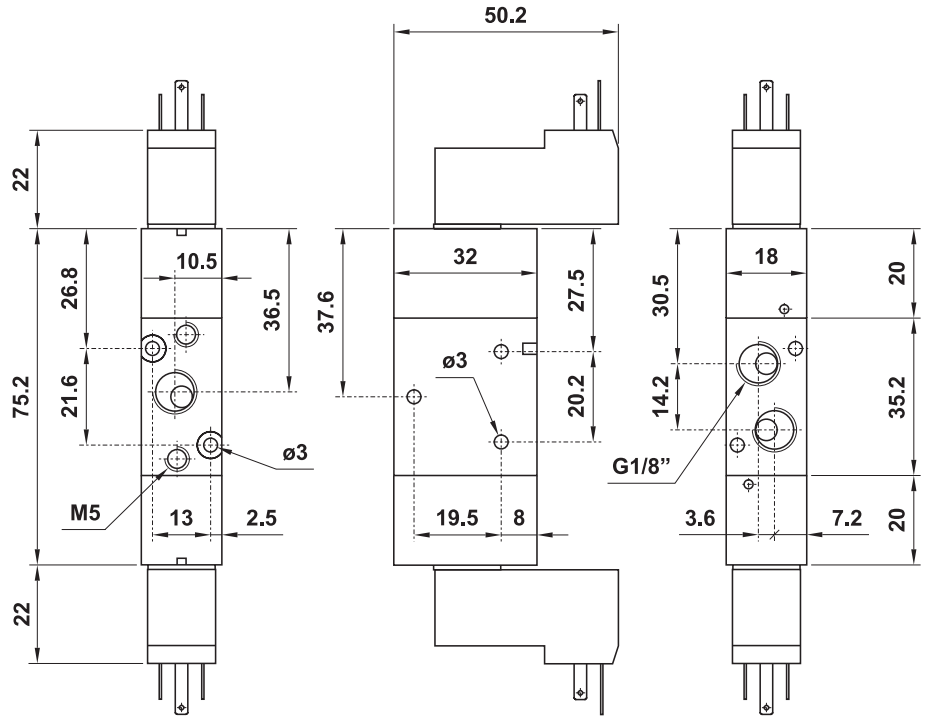
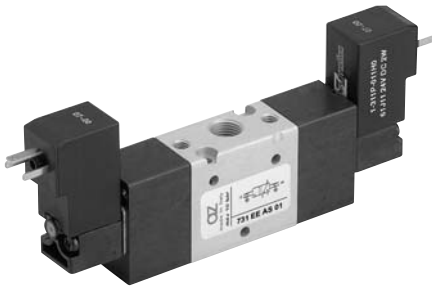
3/2 1/8" doppio comando elettrico alimentazione separata

3/2 1/8" double solenoid pilot with separate air supply



Nella sigla del prodotto sostituire le lettere "xx" con l'indicazione della tensione.
In the part number replace "xx" with the reference of the solenoid tension.

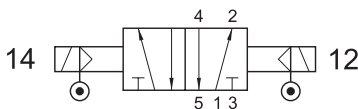
12V DC	00
24V DC	01
24V 50/60Hz	02
110V 50/60Hz	03
220V 50/60Hz	04



751 EE AS xx

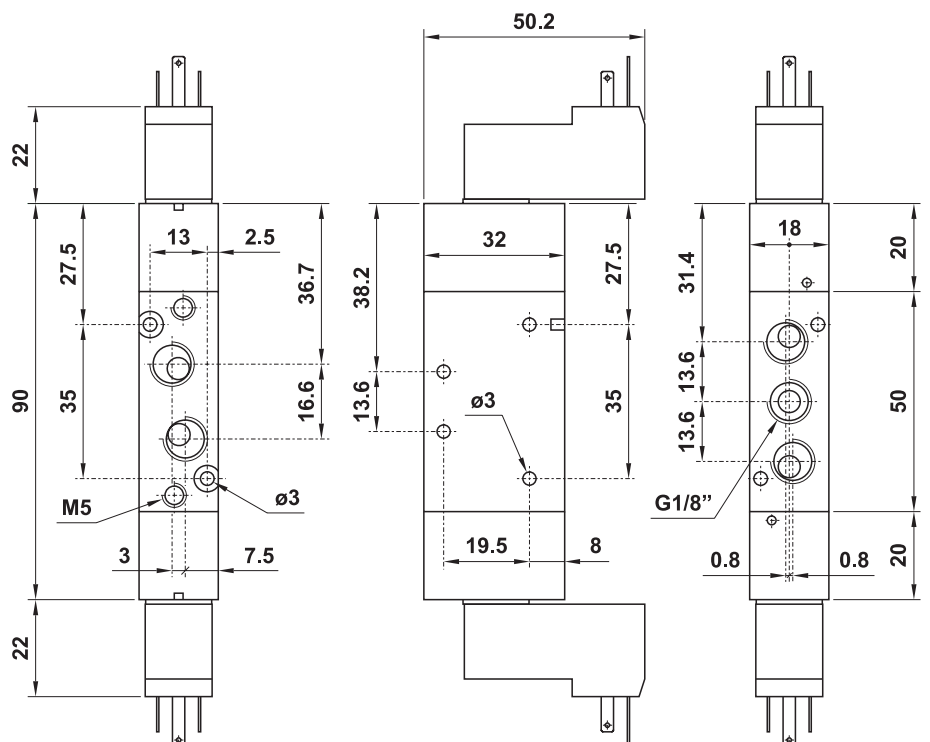
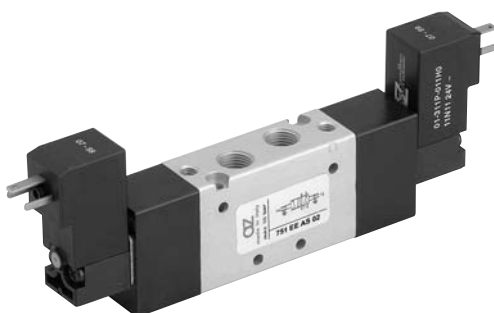
5/2 1/8" doppio comando elettrico alimentazione separata

5/2 1/8" double solenoid pilot with separate air supply



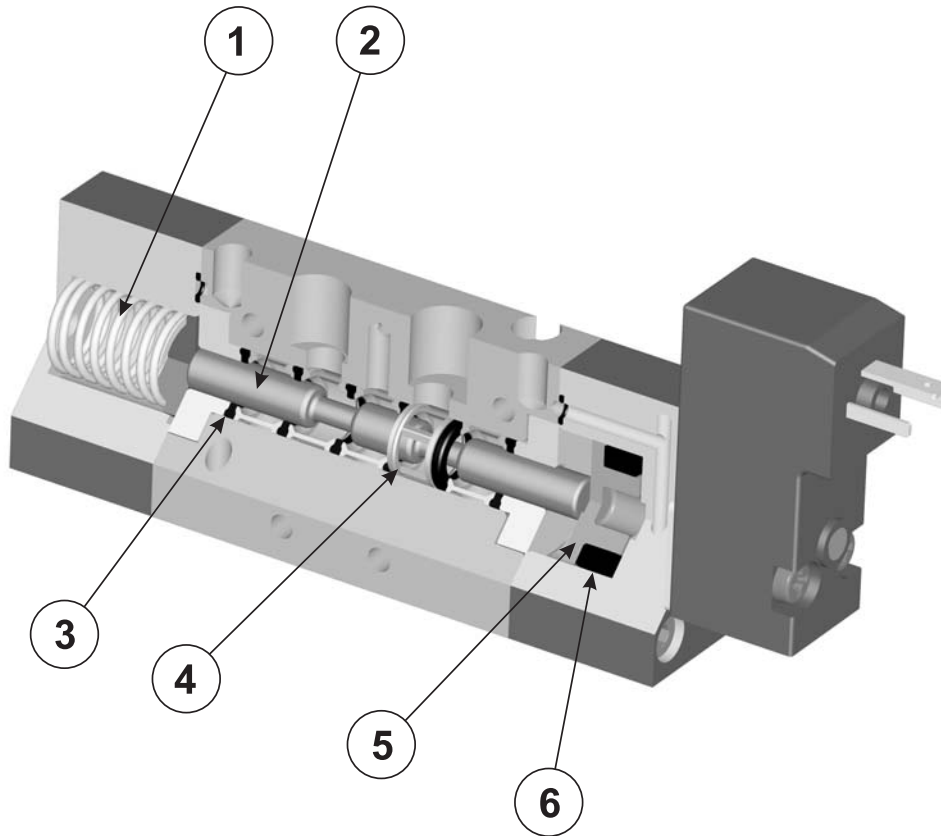
Nella sigla del prodotto sostituire le lettere "xx" con l'indicazione della tensione.
In the part number replace "xx" with the reference of the solenoid tension.

12V DC	00
24V DC	01
24V 50/60Hz	02
110V 50/60Hz	03
220V 50/60Hz	04



ricambi per valvole a spola 18 mm

spare parts for 18 mm spool valves



1. Molla: acciaio [spring: steel]
2. Spola: alluminio nichelato [spool: nickel plated aluminium]
3. Guarnizione cassetto: NBR [seal for spool: NBR]
4. Distanziale cassetto: ottone [brass]
5. Pistone per comando spola: delrin [piston to actuate the spool: delrin]
6. Guarnizione DE per pistone: NBR [seal DE for piston: NBR]

codice kit code of kit	utilizzabile per suitable for		
	731 MC	731 MCA	731 ME
05.057.2	731 MEA	731 ME AS	
05.058.2	731 CC	731 EE	731 EE AS
05.059.2	731 CCD	731 CFP	731 EFP
05.053.2	751 MC	751 ME	751 ME AS
05.054.2	751 CC	751 EE	751 EE AS
05.056.2	751 CCD	751 CFP	751 EFP
05.055.2	7513C CC	7513A CC	7513C EE
	7513A EE	7513C EE AS	7513A EE AS

sottobasi modulari per valvole 18 mm

multiple sub-bases for 18 mm spool valves



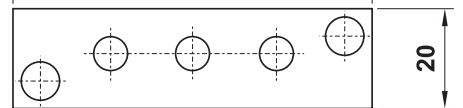
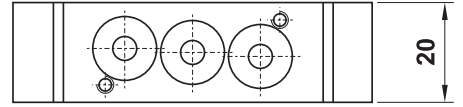
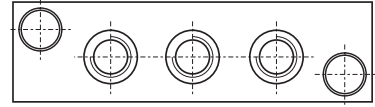
sottobase sub-base

CODICE DI ORDINAZIONE
ORDER CODE

BM751



È venduta in kit con i particolari necessari al suo assemblaggio.
It is sold in kit with all necessary pieces for installation.



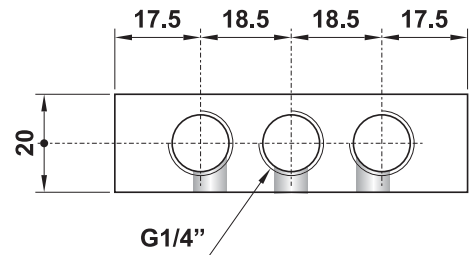
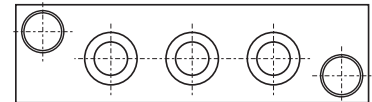
intermedio intermediate header

CODICE DI ORDINAZIONE
ORDER CODE

DR751



È venduto in kit con i particolari necessari al suo assemblaggio.
It is sold in kit with all necessary pieces for installation.



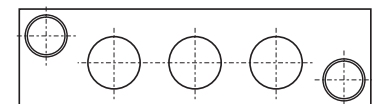
diaframma blanking piece

CODICE DI ORDINAZIONE
ORDER CODE

DC751



È venduto in kit con i particolari necessari al suo assemblaggio.
It is sold in kit with all necessary pieces for installation.



sottobasi modulari per valvole 18 mm

multiple sub-bases for 18 mm spool valves



terminale sinistro

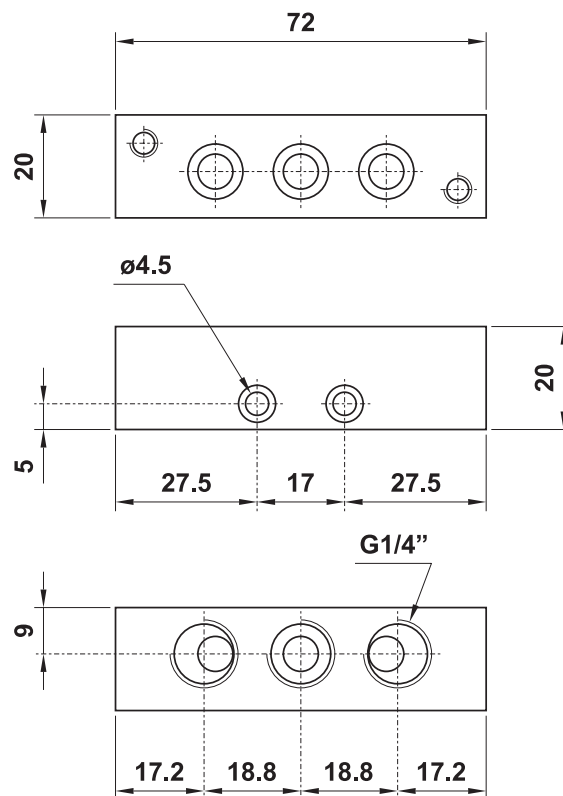
left hand header

CODICE DI ORDINAZIONE
ORDER CODE

TS751



È venduto in kit con i particolari necessari al suo assemblaggio.
It is sold in kit with all necessary pieces for installation.



terminale destro

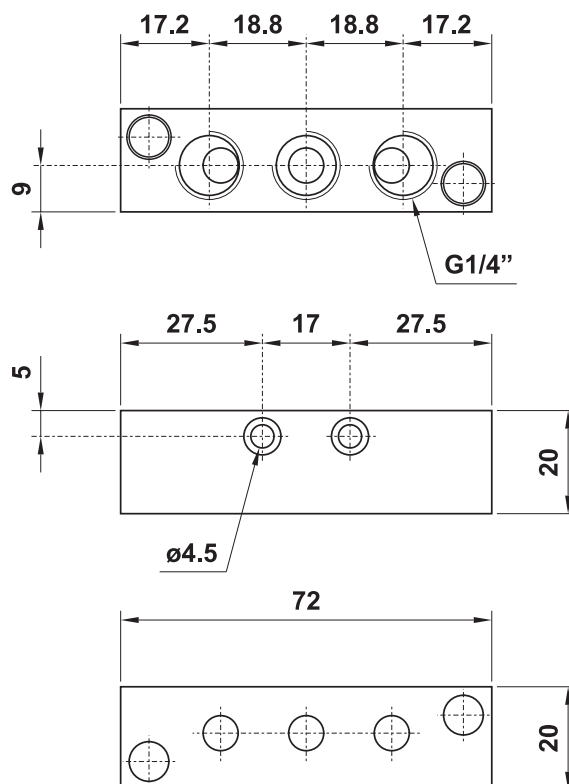
right hand header

CODICE DI ORDINAZIONE
ORDER CODE

TD751



È venduto in kit con i particolari necessari al suo assemblaggio.
It is sold in kit with all necessary pieces for installation.



sottobasi modulari per valvole 18 mm

multiple sub-bases for 18 mm spool valves

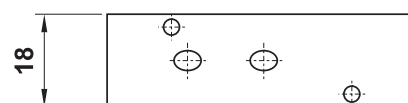
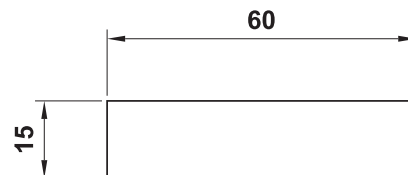
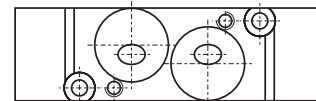


adattatore 3-5 vie

3-5 way adaptor

CODICE DI ORDINAZIONE
ORDER CODE

DD751



Per montare una valvola a 3 vie su una base per valvole a 5 vie è necessario interporre questo adattatore tra la base e la valvola.

To install a three way valve on a sub-base for five way valves it is necessary to mount this adaptor between the valve and the sub-base.

È venduto in kit con i particolari necessari al suo assemblaggio.
It is sold in kit with all necessary pieces for installation.

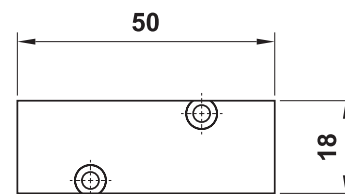
piastrina di chiusura

blanking plate

CODICE DI ORDINAZIONE
ORDER CODE

CS731

3 vie
ways



È venduta in kit con i particolari necessari al suo assemblaggio.
It is sold in kit with all necessary pieces for installation.

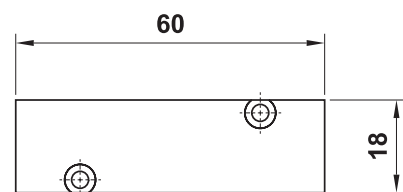
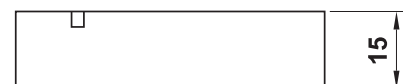
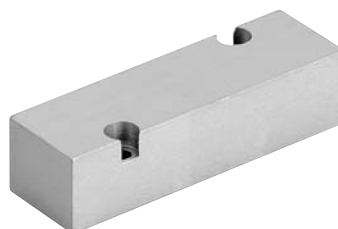
piastrina di chiusura

blanking plate

CODICE DI ORDINAZIONE
ORDER CODE

CS751

5 vie
ways



È venduta in kit con i particolari necessari al suo assemblaggio.
It is sold in kit with all necessary pieces for installation.

accessori per sottob. modulari valvole 18 mm

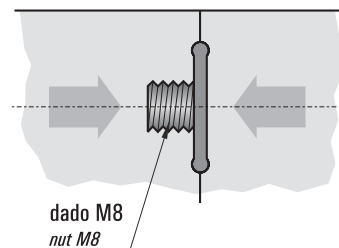
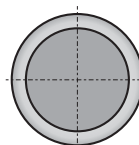
accessories for multiple sub-bases for 18 mm spool valves



guarnizione diaframma diaphragm gasket

CODICE DI ORDINAZIONE
ORDER CODE

DF851



Da inserirsi tra due sottobasi modulari per bloccare il flusso d'aria e dividere una batteria di valvole in zone alimentabili a pressioni diverse.

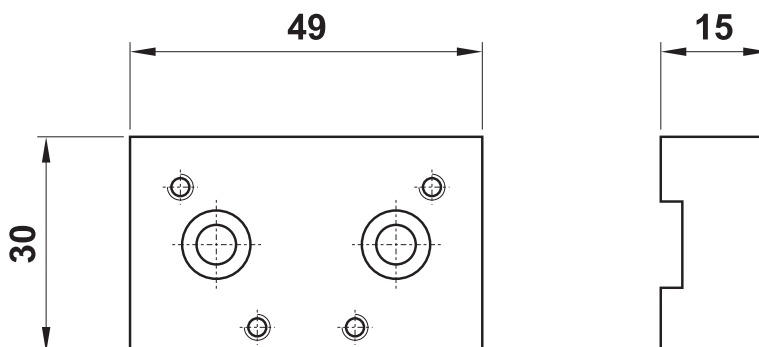
To be inserted between two sub-bases to stop the air flow and divide the manifold into separate zones.

adattatore per cilindro ISO 6431

interface for cylinder ISO 6431

CODICE DI ORDINAZIONE
ORDER CODE

05.035.2



È utilizzabile per l'installazione di una valvola della serie 751 su un cilindro ISO 6431 dall'alesaggio 32 all'alesaggio 100. Ogni pezzo è venduto con tutti i particolari necessari al suo assemblaggio.

It can be used to install a valve 751 on a cylinder ISO 6431 from bore 32 to bore 100. It is sold with all necessary pieces for installation.

Per l'installazione sul cilindro è necessario innanzi tutto smontare una delle due testate.

For the installation on the cylinder it is necessary to remove one end cap.

adattatore per profilo omega

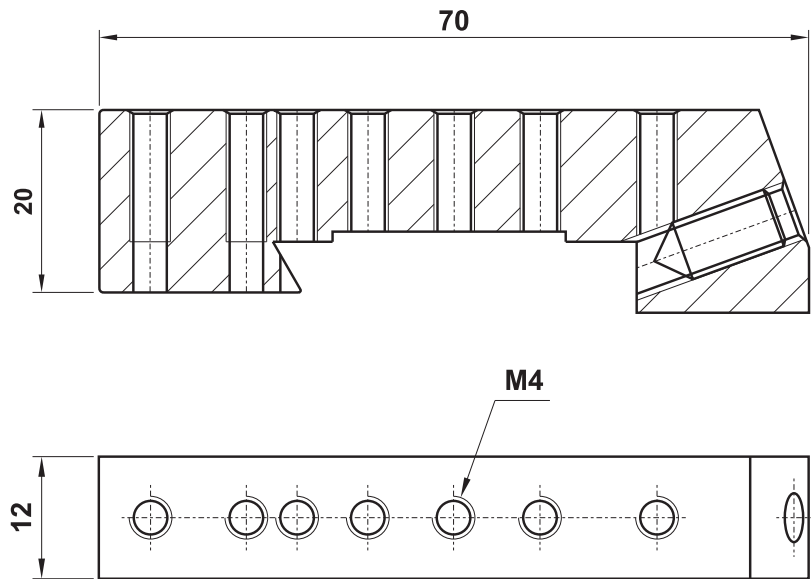
interface for omega-profile



adattatore per profilo omega interface for omega-profile

CODICE DI ORDINAZIONE
ORDER CODE

00.109.2



È utilizzabile per l'installazione di una sottobase a posti fissi per valvole della serie 751, 731, 521, 522, 851 su una barra a profilo Ω (omega).

Per il fissaggio è necessario utilizzare le viti (non incluse nel kit) qui indicate:

- sottobasi posti fissi e modulari per valvole 851: n. 2 viti a brugola zincate bianche M4x40
- sottobasi posti fissi e modulari per valvole 751 e 731: n. 2 viti a brugola zincate bianche M4x20
- sottobasi posti fissi per valvole 521: n. 2 viti a brugola zincate bianche M4x25
- sottobasi posti fissi per valvole 522: n. 2 viti a brugola zincate bianche M4x30

It can be used to install a manifold for valves 751, 731, 521, 522, 851 on a profile Ω (omega).

For installation use the following screws (screws are not supplied with the kit):

- manifolds and multiple sub-bases for valves 851: n. 2 screws M4x40
- manifolds and multiple sub-bases for valves 751 and 731: n. 2 screws M4x20
- manifolds for valves 521: n. 2 screws M4x25
- manifolds for valves 522: n. 2 screws M4x30